

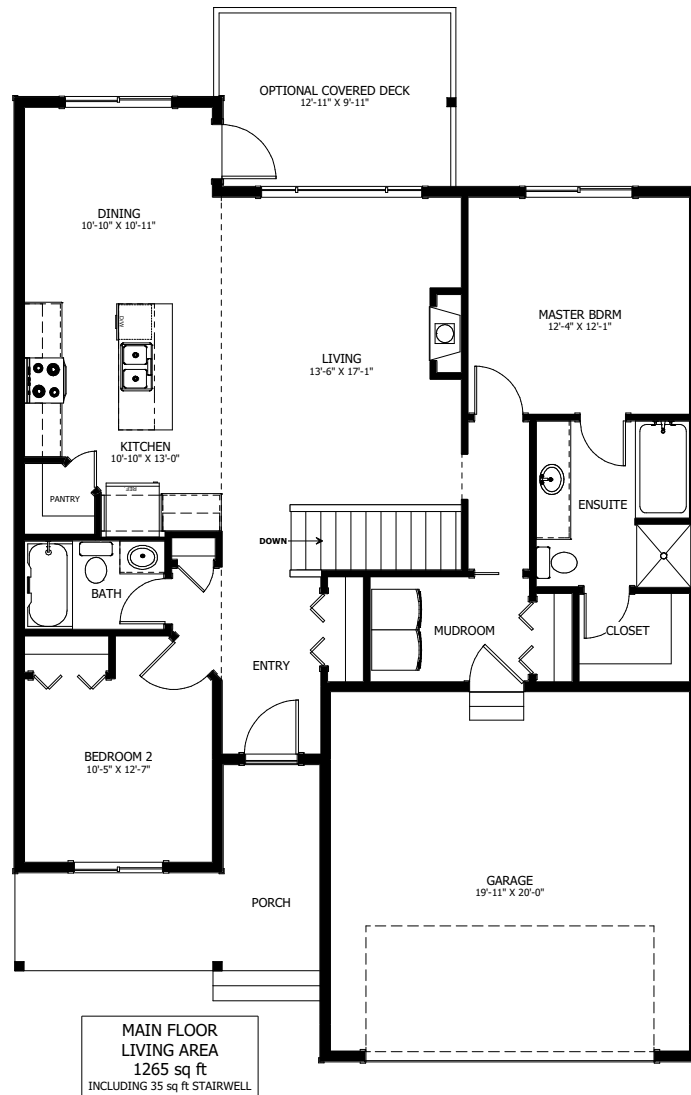
THE TEEPEE



2 BED - 2 BATH

STARTING AT \$339,000 + GST
PRICE VALID UNTIL MARCH 31ST, 2019

38'-0" X 53'-6"



MAIN FLOOR
LIVING AREA
1265 sq ft
INCLUDING 35 sq ft STAIRWELL



NEW DAWN
DEVELOPMENTS

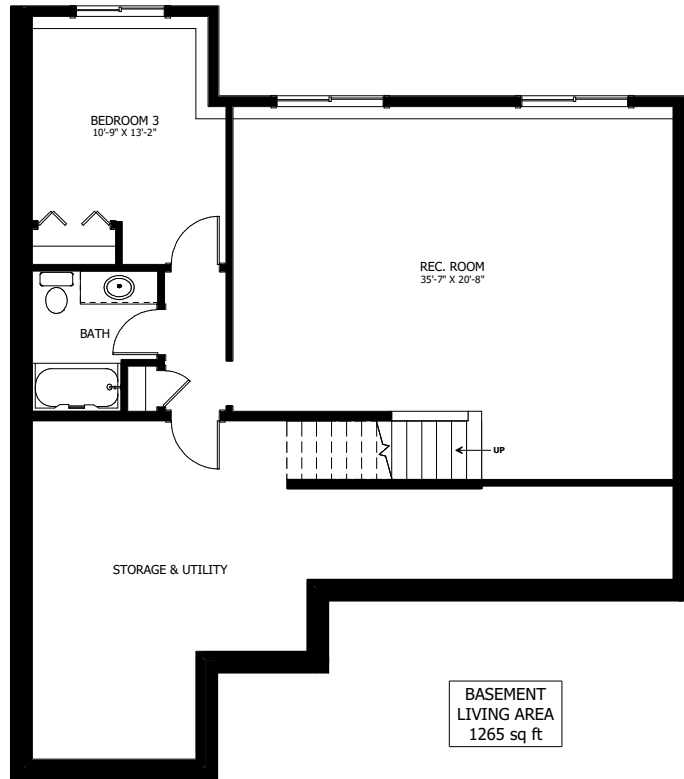
CALL US TODAY: 250-489-1519
WWW.NEWDAWNDEVELOPMENTS.COM

FLOOR PLAN HIGHLIGHTS:

- SUITABLE FOR LOTS 4, 7, 9, 14, & 15
- VAULTED CEILING IN ENTRY, STAIRWELL, & LIVING ROOM
- SOAKER TUB IN ENSUITE
- LARGE 'L' SHAPED KITCHEN WITH CORNER PANTRY

OPTIONAL UPGRADES:

- DEVELOPED BASEMENT WITH REC. ROOM, BEDROOM, & BATH
- GAS FIREPLACE IN LIVING ROOM
- SECOND SINK IN ENSUITE
- COVERED REAR DECK
- LOWER LEVEL WALKOUT



NEW DAWN
DEVELOPMENTS

PLANS AND ELEVATIONS ARE APPROXIMATE AND DISPLAY NON-STANDARD FEATURES. ELEVATIONS MAY VARY BY COMMUNITY & THE BUILDER RESERVES THE RIGHT TO MAKE MODIFICATIONS WITHOUT NOTICE. ALL FLOOR PLANS AND ELEVATIONS ARE THE EXCLUSIVE PROPERTY OF NEW DAWN DEVELOPMENTS. ALL RIGHTS RESERVED, INCLUDING THE RIGHT OF REPRODUCTION, IN PART OR IN WHOLE. PRICES VALID TO MARCH 31, 2019.