

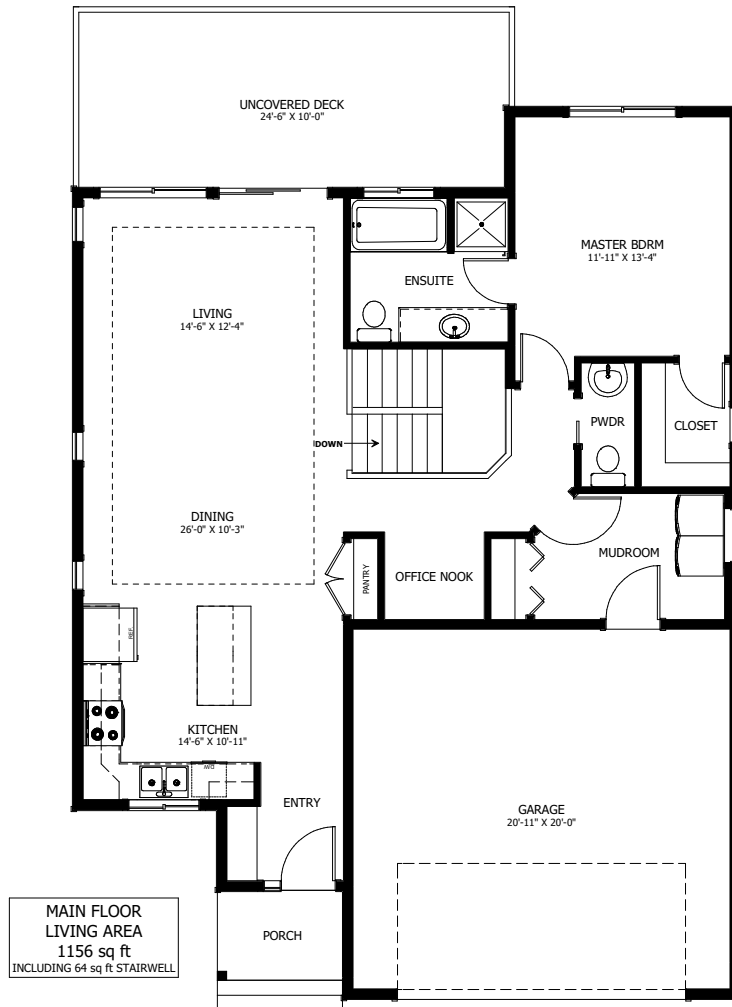
# THE BAKER



1 BED - 1.5 BATH

STARTING AT \$309,000 + GST  
PRICE VALID UNTIL MARCH 31ST, 2019

37'-0" X 49'-6"



NEW DAWN  
DEVELOPMENTS

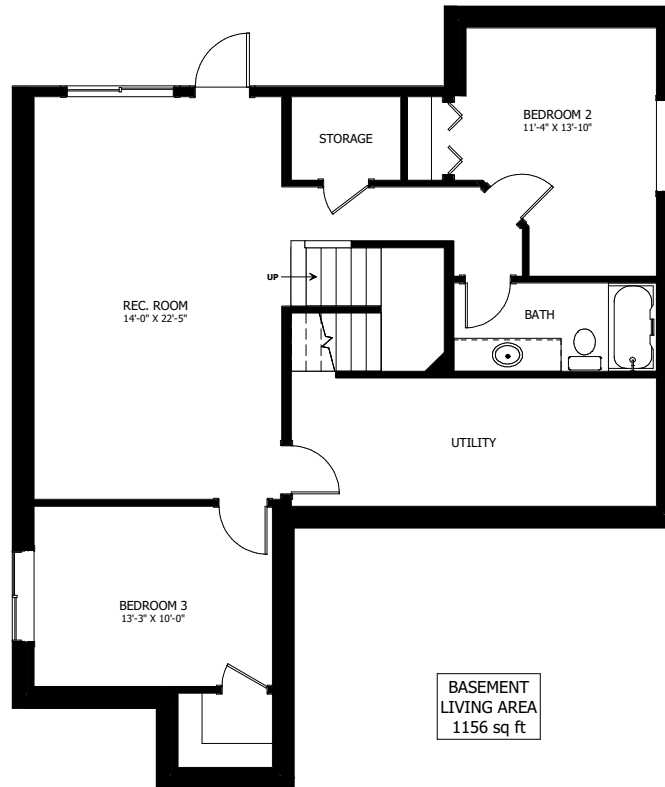
CALL US TODAY: 250-489-1519  
[WWW.NEWDAWNDEVELOPMENTS.COM](http://WWW.NEWDAWNDEVELOPMENTS.COM)

## FLOOR PLAN HIGHLIGHTS:

- SUITED FOR LOTS 4, 6-11, & 13-19
- FRONT KITCHEN VIEWS
- REAR LIVING ROOM VIEWS
- FEATURE STAIRWELL
- PRIVATE OFFICE NOOK
- OVERSIZED REAR DECK

## OPTIONAL UPGRADES:

- DEVELOPED BASEMENT WITH REC. ROOM, 2 BEDROOMS, & BATH
- TRAY CEILING IN DINING & LIVING
- SECOND SINK IN ENSUITE
- COVERED REAR DECK
- STAIRS FROM DECK TO GRADE



**NEW DAWN**  
DEVELOPMENTS

PLANS AND ELEVATIONS ARE APPROXIMATE AND DISPLAY NON-STANDARD FEATURES. ELEVATIONS MAY VARY BY COMMUNITY & THE BUILDER RESERVES THE RIGHT TO MAKE MODIFICATIONS WITHOUT NOTICE. ALL FLOOR PLANS AND ELEVATIONS ARE THE EXCLUSIVE PROPERTY OF NEW DAWN DEVELOPMENTS. ALL RIGHTS RESERVED, INCLUDING THE RIGHT OF REPRODUCTION, IN PART OR IN WHOLE. PRICES VALID TO MARCH 31, 2019.