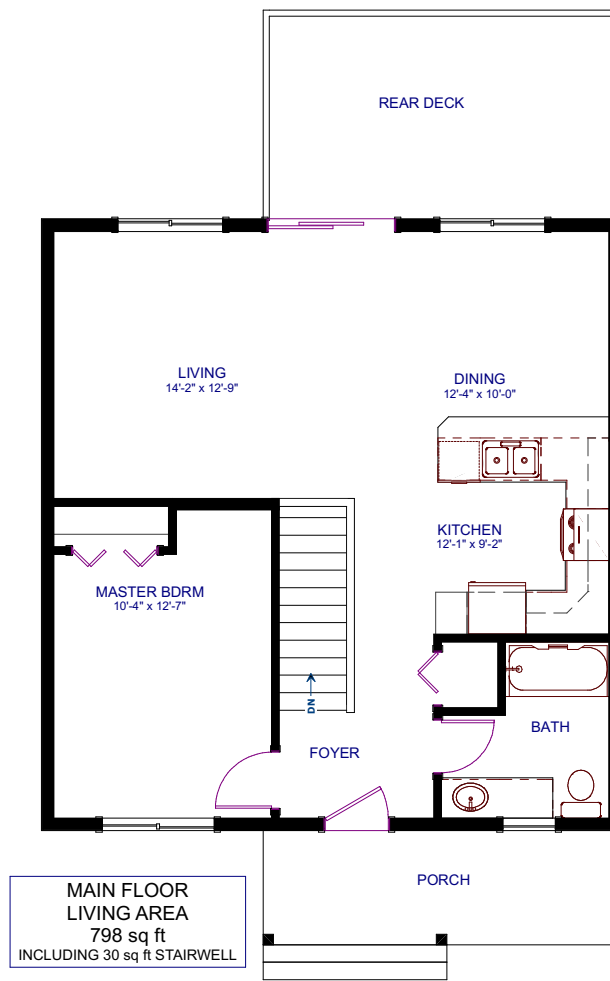




# THE HEATHER

1 BED - 1 BATH

27'-6" x 29'-0"



NEW DAWN  
DEVELOPMENTS

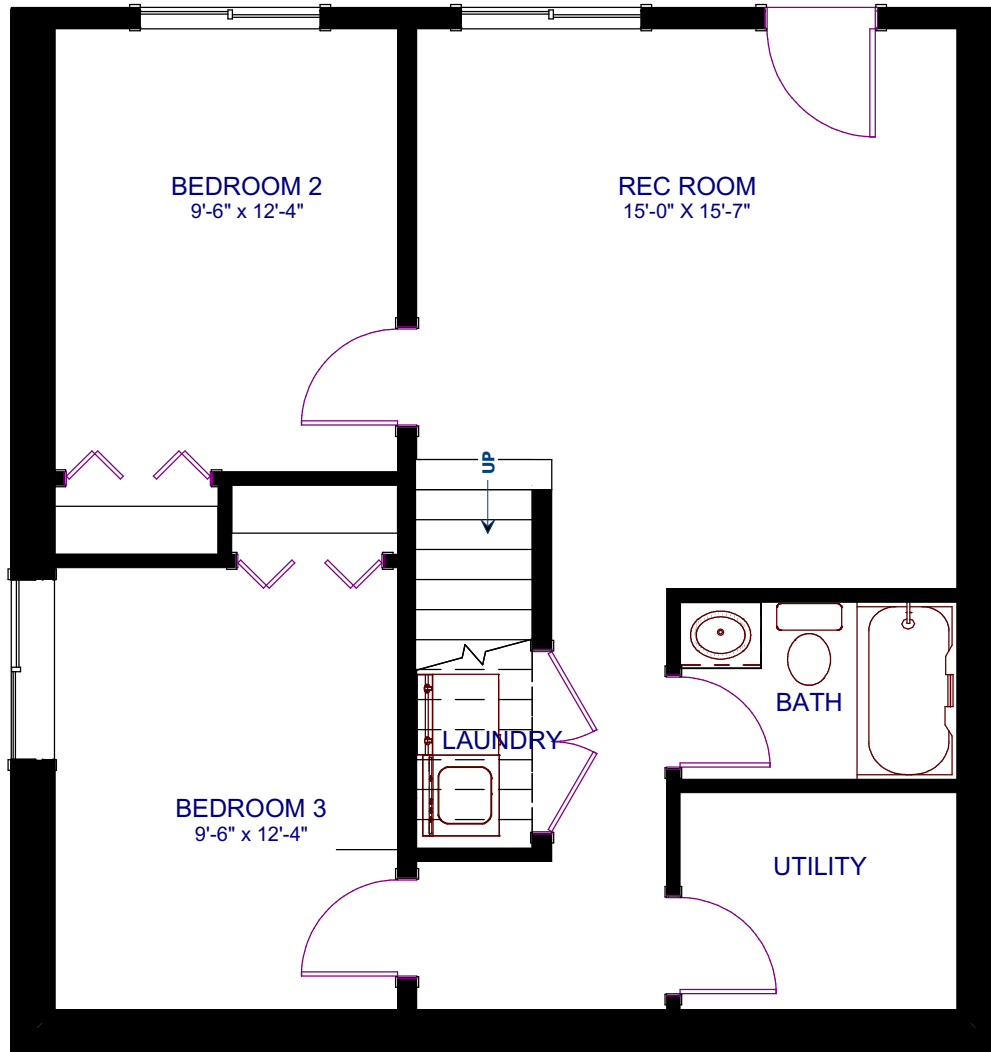
CALL US TODAY: 250-489-1519  
[WWW.NEWDAWNDEVELOPMENTS.COM](http://WWW.NEWDAWNDEVELOPMENTS.COM)

### FLOOR PLAN HIGHLIGHTS:

- U-SHAPED KITCHEN WITH EATING BAR
- OPEN DINING/LIVING/KITCHEN SPACE
- SPACIOUS REC ROOM
- COVERED FRONT PORCH
- LARGE REAR DECK
- SHAKE SIDING ON FRONT GABLE

### OPTIONAL UPGRADES:

- DEVELOPED BASEMENT WITH ADDITIONAL BEDROOMS & BATH
- FULL WIDTH REAR DECK
- VAULTED CEILING
- GAS FIREPLACE IN LIVING ROOM
- EXTERIOR STONE ACCENTS



**BASEMENT  
LIVING AREA**  
798 sq ft  
INCLUDING 33 sq ft STAIRWELL



**NEW DAWN  
DEVELOPMENTS**

PLANS AND ELEVATIONS ARE APPROXIMATE AND DISPLAY NON-STANDARD FEATURES. ELEVATIONS MAY VARY BY COMMUNITY & THE BUILDER RESERVES THE RIGHT TO MAKE MODIFICATIONS WITHOUT NOTICE. ALL FLOOR PLANS AND ELEVATIONS ARE THE EXCLUSIVE PROPERTY OF NEW DAWN DEVELOPMENTS. ALL RIGHTS RESERVED. INCLUDING THE RIGHT OF REPRODUCTION, IN PART OR IN WHOLE. LAST UPDATED, OCTOBER 2021