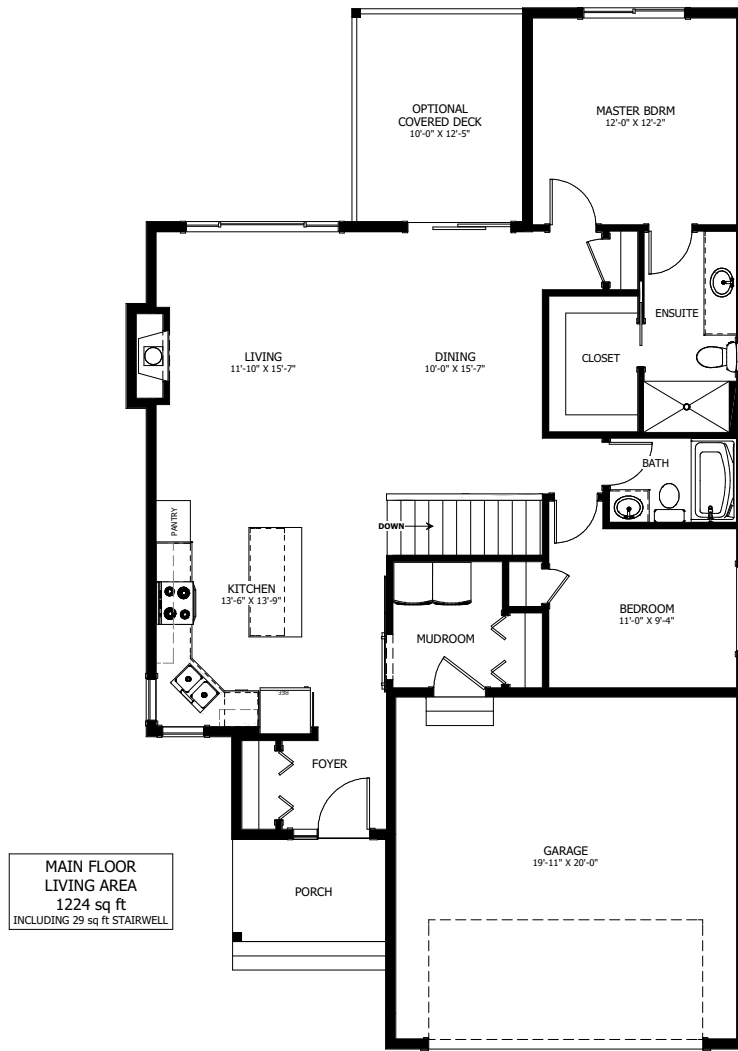


THE HALEY



2 BED - 1.5 BATH

35'-0" X 60'-9"



NEW DAWN
DEVELOPMENTS

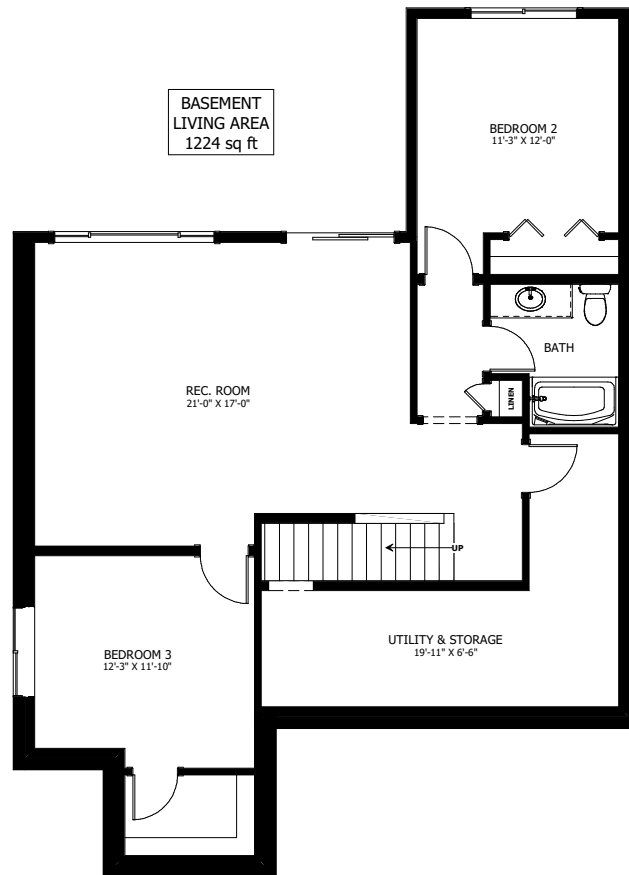
CALL US TODAY: 250-489-1519
WWW.NEWDAWNDEVELOPMENTS.COM

FLOOR PLAN HIGHLIGHTS:

- REAR LIVING & DINING ROOM VIEWS
- REAR MASTER BEDROOM VIEWS
- OVERSIZED 'L' SHAPED KITCHEN
- SLIDING BARN DOOR TO MUDROOM
- ENSUITE WITH LARGE WALK-IN CLOSET

OPTIONAL UPGRADES:

- DEVELOPED BASEMENT WITH REC. ROOM, 2 BEDROOMS, & BATH
- LOWER LEVEL WALK-OUT
- VAULTED LIVING, DINING & DECK
- SECOND SINK IN ENSUITE
- GAS FIREPLACE IN LIVING ROOM



NEW DAWN
DEVELOPMENTS

PLANS AND ELEVATIONS ARE APPROXIMATE AND DISPLAY NON-STANDARD FEATURES. ELEVATIONS MAY VARY BY COMMUNITY & THE BUILDER RESERVES THE RIGHT TO MAKE MODIFICATIONS WITHOUT NOTICE. ALL FLOOR PLANS AND ELEVATIONS ARE THE EXCLUSIVE PROPERTY OF NEW DAWN DEVELOPMENTS. ALL RIGHTS RESERVED, INCLUDING THE RIGHT OF REPRODUCTION, IN PART OR IN WHOLE. LAST UPDATED MAY, 2021.