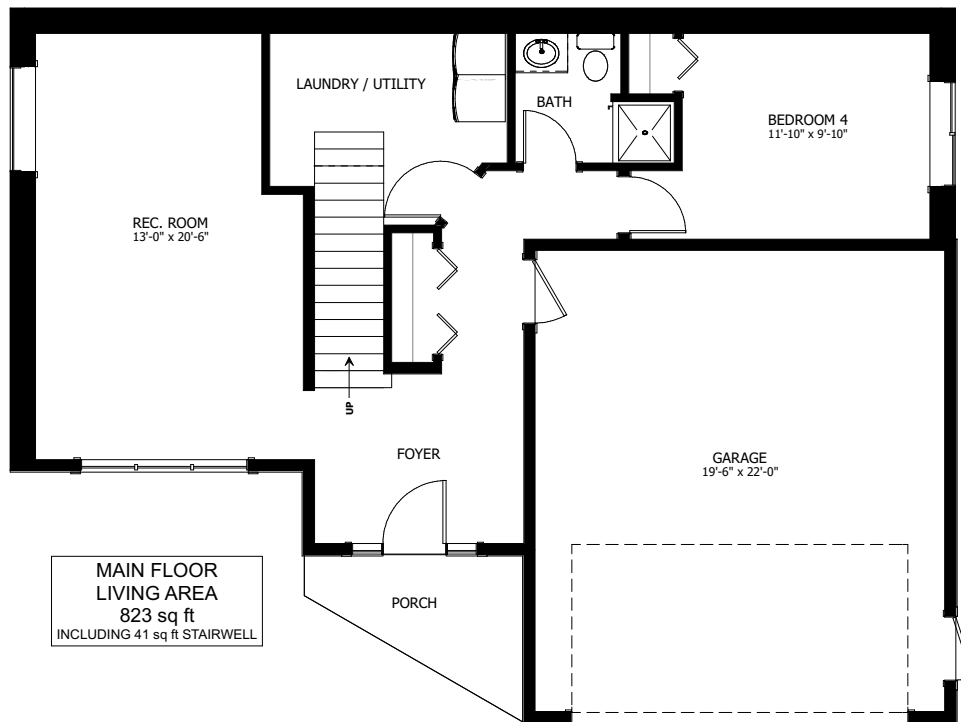




# THE MEADOWLARK

3 BED - 2.5 BATH

45'-0" X34'-0"



NEW DAWN  
DEVELOPMENTS

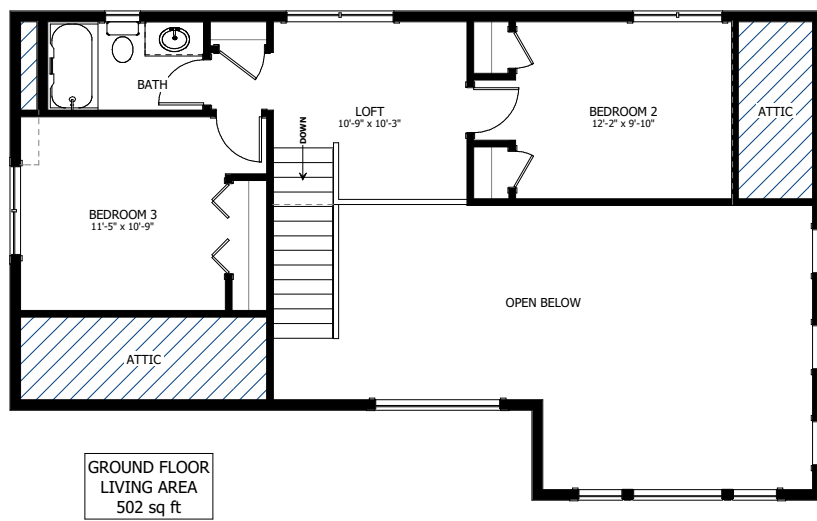
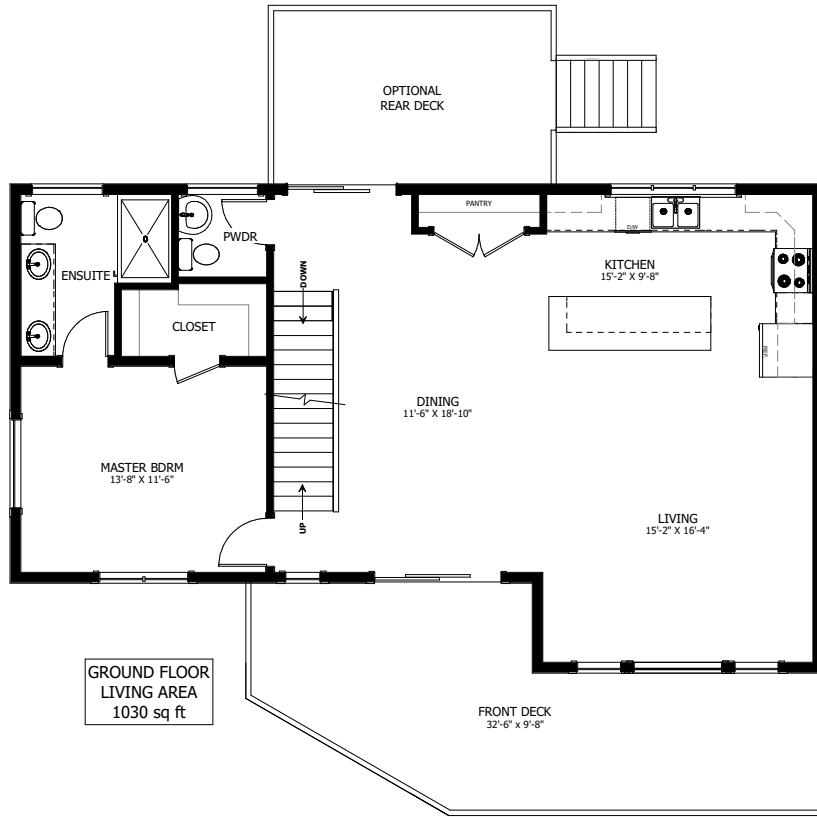
CALL US TODAY: 250-489-1519  
[WWW.NEWDAWNDEVELOPMENTS.COM](http://WWW.NEWDAWNDEVELOPMENTS.COM)

## FLOOR PLAN HIGHLIGHTS:

- TWO STOREY VAULTED CEILINGS
- LIVING ROOM WINDOW WALL
- 9' LONG KITCHEN ISLAND
- LARGE FRONT DECK
- ALTERNATIVE MODERN EXTERIOR

## OPTIONAL UPGRADES:

- DEVELOPED BASEMENT WITH ADDITIONAL BEDROOM & BATH
- SECOND SINK IN ENSUITE
- SIDE MAN DOOR IN GARAGE
- REAR DECK



NEW DAWN  
DEVELOPMENTS

PLANS AND ELEVATIONS ARE APPROXIMATE AND DISPLAY NON-STANDARD FEATURES. ELEVATIONS MAY VARY BY COMMUNITY & THE BUILDER RESERVES THE RIGHT TO MAKE MODIFICATIONS WITHOUT NOTICE. ALL FLOOR PLANS AND ELEVATIONS ARE THE EXCLUSIVE PROPERTY OF NEW DAWN DEVELOPMENTS. ALL RIGHTS RESERVED. INCLUDING THE RIGHT OF REPRODUCTION, IN PART OR IN WHOLE. LAST UPDATED, MAY 2021